

Word of the Day

Autumn Term 2020

Week 4 – 22nd September 2025



'Words unlock the doors to a world of understanding...'

This Week's Words

Grasshopper

voice

mirror

crowd

petal

meal

Shinobi

forbidden

appearance

arrogant

refuge

collapse



VOCABULARY NINJA

Grasshopper (Tier 1)

voice

mirror

crowd

petal

meal



VOCABULARY NINJA

Shinobi (Tier 2)

forbidden
appearance
arrogant
refuge
collapse



VOCABULARY NINJA



Grasshopper Word of the Day

Word of the Day:

Pronunciation / Syllables

voice
(voice)

Word Class
(noun)

Definition:

When someone speaks or sings,
you hear their voice.



Hamza has a beautiful singing **voice**.

Synonym:

tone
sound

Antonym:

quiet
silence

Prefix / Suffix:

in-
-s

Rhyme:

choice
rejoice

Link Word:

calm
shaky



Grasshopper Word of the Day

Word of the Day:

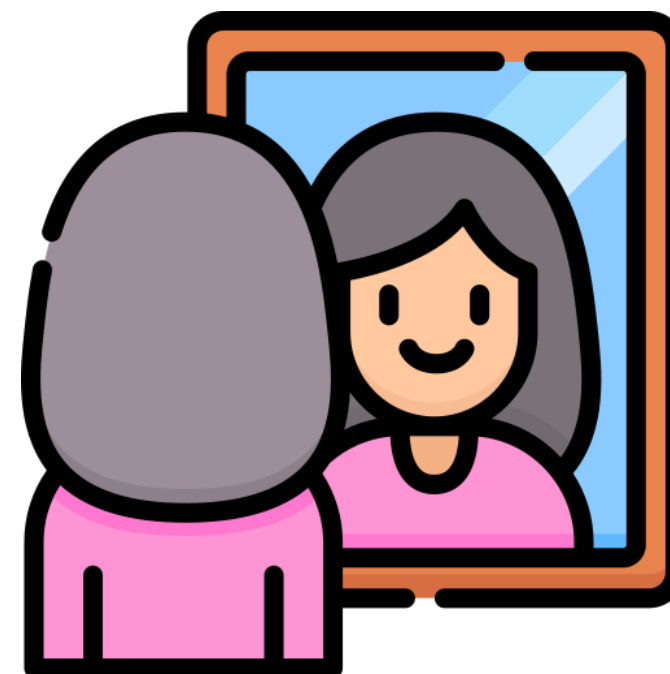
mirror
(*mir-ror*)

Word Class
(noun / verb)

Pronunciation / Syllables

Definition:

A mirror is a flat piece of glass which reflects light, so that when you look at it you can see yourself reflected in it.



I can see myself in the **mirror**.

Synonym:

glass

Antonym:

Prefix / Suffix:

-s

-ed

Rhyme:

nearer

clearer

Link Word:

large

old



Grasshopper Word of the Day

Word of the Day:

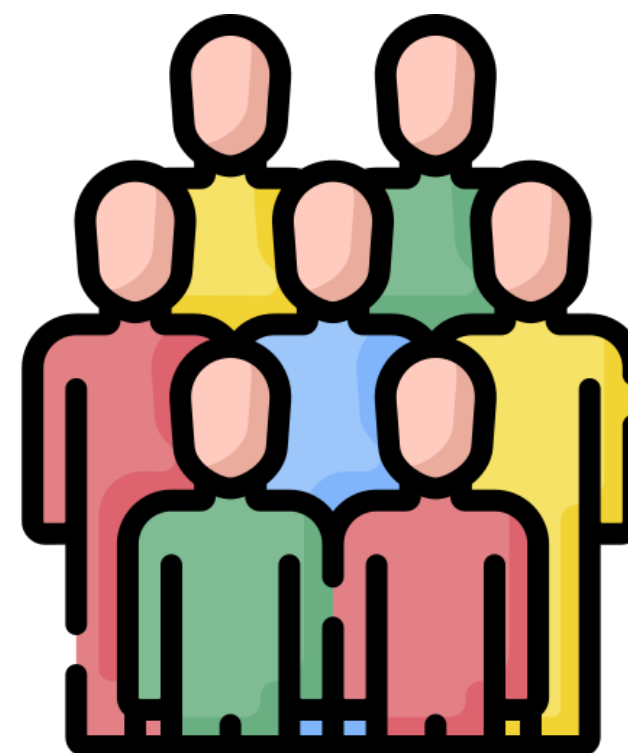
Pronunciation / Syllables

crowd
(crowd)

Word Class
(noun / verb)

Definition:

A crowd is a large group of people who have gathered together, for example to watch or listen to something interesting, or to protest about something.



The **crowd** came along for the school play.

Synonym:

horde

mob

Antonym:

single

one

Prefix / Suffix:

over-

-ed

Rhyme:

proud

loud

Link Word:

growing

huge



Grasshopper Word of the Day

Word of the Day:

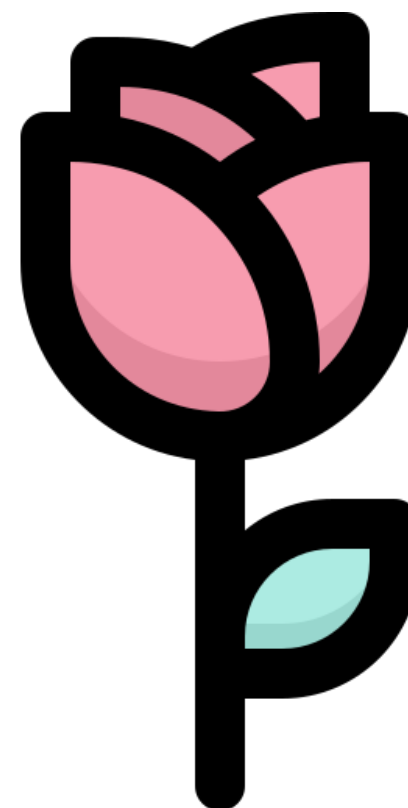
Pronunciation / Syllables

petal
(pet-al)

Word Class
(noun)

Definition:

The petals of a flower are the thin coloured or white parts which together form the flower.



The **petals** of the flower were pink and red.

Synonym:

leaf

Antonym:

Prefix / Suffix:

-s

Rhyme:

metal

settle

Link Word:

colourful

fragrant



Grasshopper Word of the Day

Word of the Day:

Pronunciation / Syllables

meal
(meal)

Word Class
(noun)

Definition:

A meal is an occasion when people sit down and eat, usually at a regular time.



Everyone ate a yummy **meal** for lunch.

Synonym:

supper

snack

Antonym:

Prefix / Suffix:

-s

-time

Rhyme:

feel

real

Link Word:

tasty

warm



Shinobi Word of the Day

Word of the Day: **forbidden**

Word Class
(adjective)

Pronunciation / Syllables

(for-bid-den)

Definition:

If something is forbidden,
you are not allowed to do it
or have it.



Football was **forbidden** on the school playground.

Synonym:

illegal

outlawed

Antonym:

legal

permitted

Prefix / Suffix:

Rhyme:

hidden

given

Link Word:

strictly

completely



Shinobi Word of the Day

Word Class
(noun)

Word of the Day: **appearance**

Pronunciation / Syllables

(*ap-pear-ance*)

Definition:

Someone's or something's appearance is the way that they look.



Jennifer's **appearance** was smart and strong.

Synonym:

image

look

Antonym:

Prefix / Suffix:

dis-

-s

Rhyme:

interference

clearance

Link Word:

beautiful

unkempt



Shinobi Word of the Day

Word of the Day:

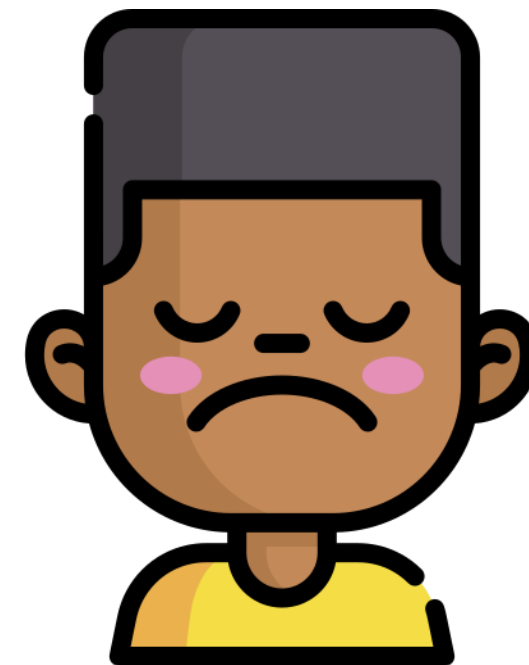
arrogant
(ar-ro-gant)

Word Class
(adjective)

Pronunciation / Syllables

Definition:

Someone who is arrogant behaves in a proud, unpleasant way towards other people because they believe that they are more important than others.



Felix could be quite arrogant in maths lessons.

Synonym:

cocky

aloof

Antonym:

humble

modest

Prefix / Suffix:

-ly

Rhyme:

elegant

experiment

Link Word:

person

actions



Shinobi Word of the Day

Word of the Day:

Pronunciation / Syllables

refuge
(ref-u-ge)

Word Class
(noun)

Definition:

If you take refuge somewhere, you try to protect yourself from physical harm by going there.



The family took **refuge** in the Anderson shelter.

Synonym:

shelter
sanctuary

Antonym:

Prefix / Suffix:

-es

Rhyme:

deluge
refuse

Link Word:

warm
safe



Shinobi Word of the Day

Word of the Day:

collapse
(col-lapse)

Word Class
(verb)

Pronunciation / Syllables

Definition:

If you collapse, you suddenly faint or fall down because you are very ill or weak.



Mrs. Jones **collapsed** onto her desk at home time.

Synonym:

slump

fall down

Antonym:

hold up

Prefix / Suffix:

-ing

-ed

Rhyme:

perhaps

traps

Link Word:

totally

gently

Vocabulary Laboratory



Describe / Definition:

Use it in a sentence:

Focus Word (write below):

Word Class:

Synonyms:

(words with same / similar meaning)

Antonyms:

(words with opposite meaning)

Draw your sentence:

Rhymes:

(words that sound the same)

Link Words:

(Example: football = pitch, team, player)

Vocabulary Visualiser

Draw the
Grasshopper words
and bring them to life.



Word: mirror

Word: petal

Word: crowd

Word: meal



Vocabulary Visualiser

Draw the **Shinobi**
words and bring
them to life.



Word: forbidden

Word: refuge

Word: appearance

Word: collapse



Matching Meanings

Draw lines from the **Grasshopper** words to their definitions.



Grasshopper Word

Grasshopper Definitions

voice

A *** is a large group of people who have gathered together, for example to watch or listen to something interesting, or to protest about something.



mirror

A *** is an occasion when people sit down and eat, usually at a regular time.



crowd

When someone speaks or sings, you hear their ***.



petal

The *** of a flower are the thin coloured or white parts which together form the flower.



meal

A *** is a flat piece of glass which reflects light, so that when you look at it you can see yourself reflected in it.



Matching Meanings

Draw lines from the **Shinobi** words to their definitions.



Shinobi Word

Shinobi Definitions

forbidden

Someone who is *** behaves in a proud, unpleasant way towards other people because they believe that they are more important than others.



appearance

Someone's or something's *** is the way that they look.



arrogant

If you take *** somewhere, you try to protect yourself from physical harm by going there.



refuge

If you ***, you suddenly faint or fall down because you are very ill or weak.



collapse

If something is ***, you are not allowed to do it or have it.





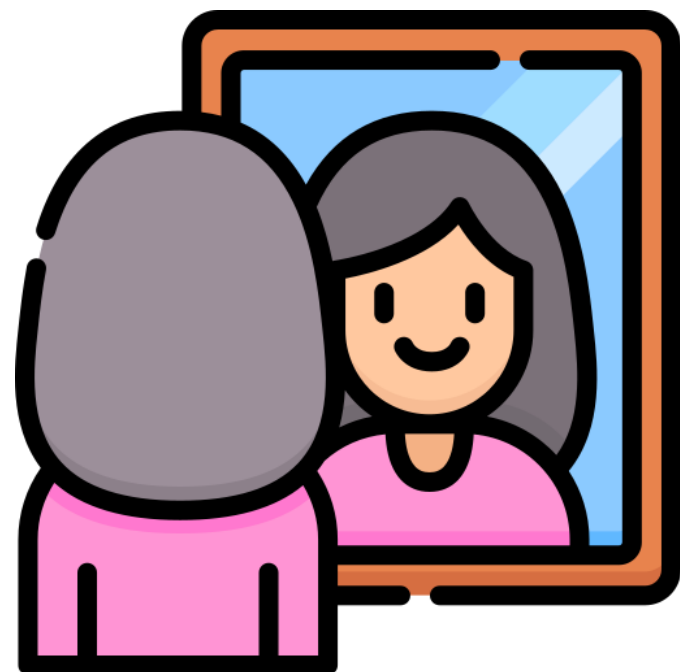
Display Slips

The following slides are for classroom display. As you teach each Word of the Day, words can be displayed in the classroom to enable pupils to use the taught vocabulary in an independent manner.





voice

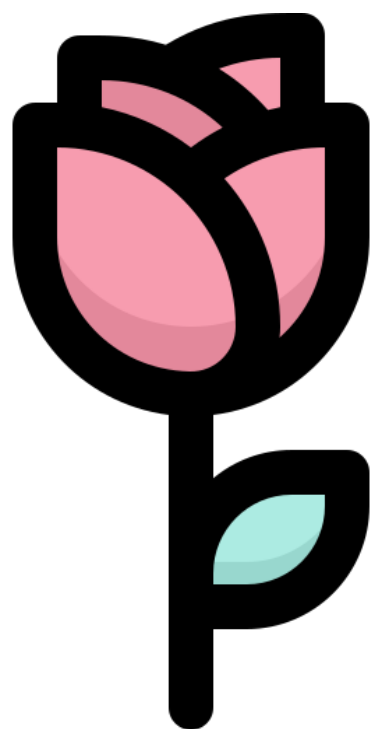
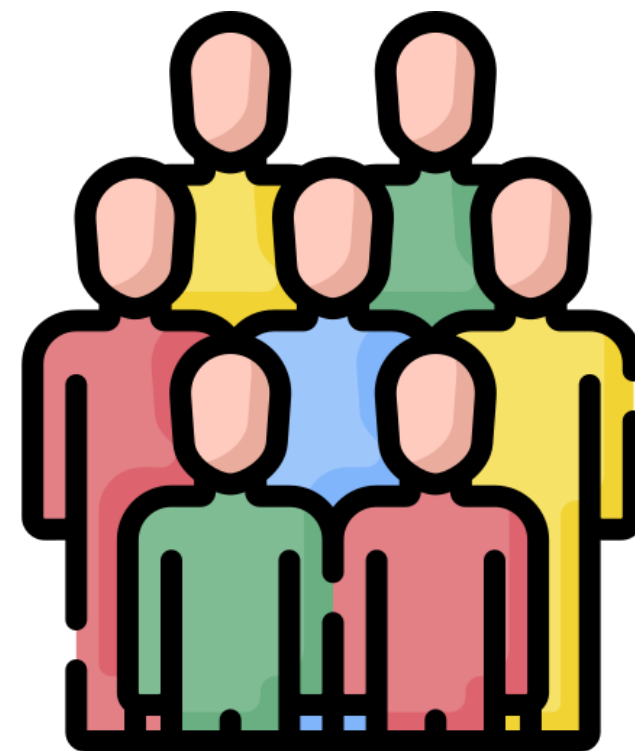


mirror





crowd



petal





meal

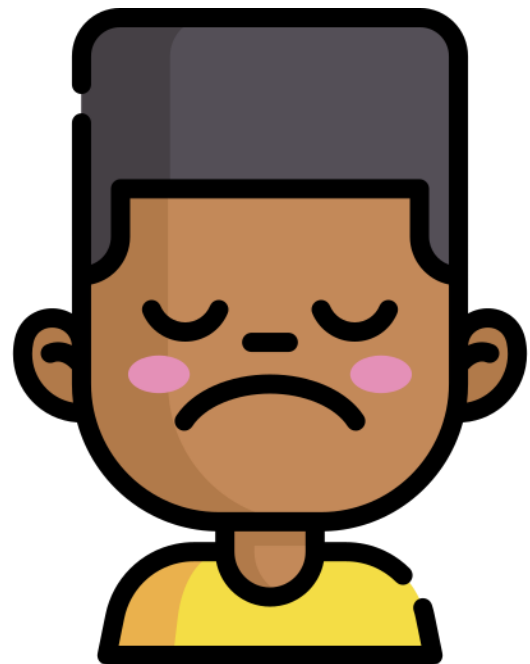
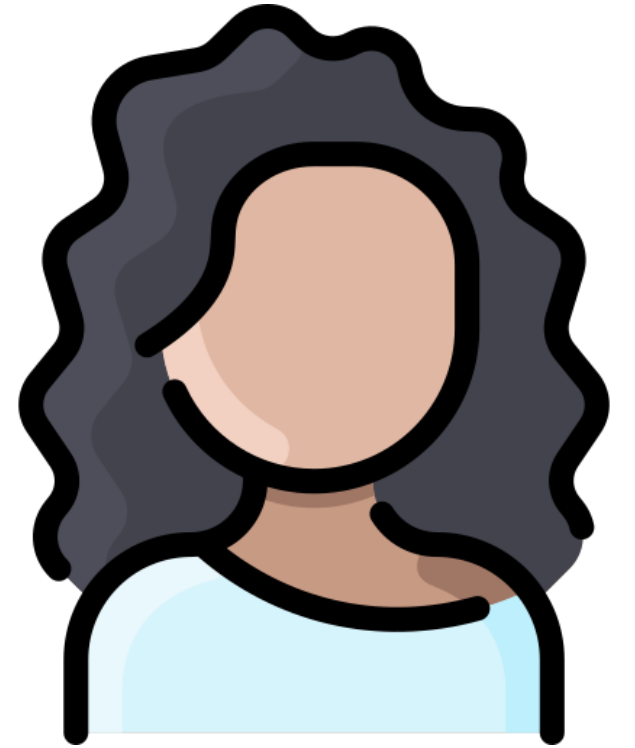


forbidden





appearance

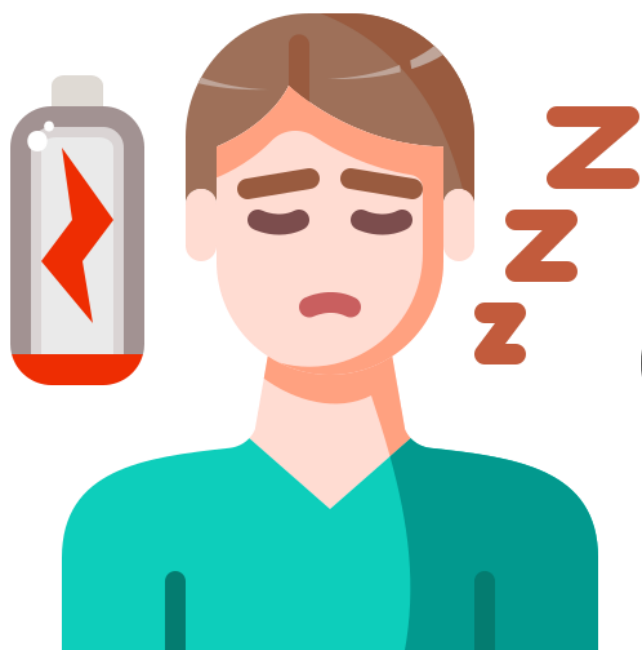


arrogant





refuge



collapse

